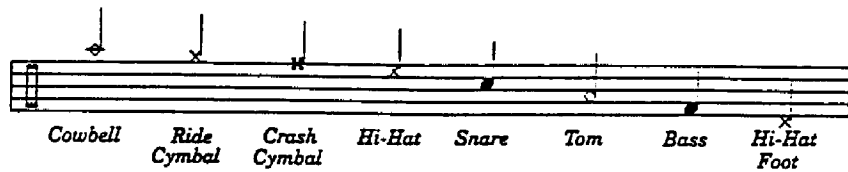


Maine All - State Jazz

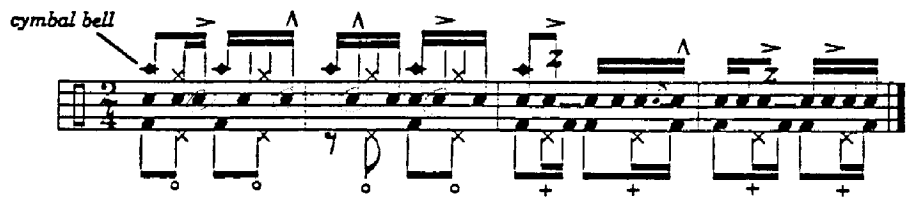
Rhythm Section Audition Material

1. Guitar/Piano - comp. in appropriate style
2. Bass - prepare lines appropriate for each style
3. Drums - prepare 4 style examples
A. Samba B. Jazz Waltz C. Funk D. Bossa Nova

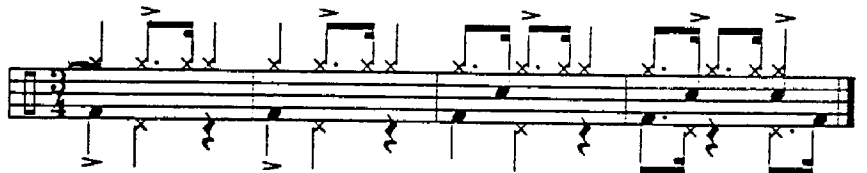


Key:

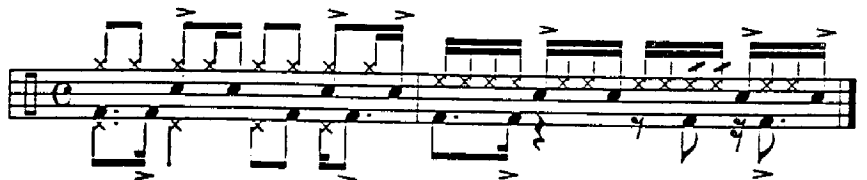
Samba ♩ = 96 - 120
Snares on.
Open hi-hat where indicated.



Jazz Waltz ♩ = 132 - 200



Funk ♩ = 100 - 126



Bossa Nova ♩ = 104 - 160
Left hand - cross stick rim shot.
Right hand - brush (on snare, hi-hat or ride).

